

Providing Corporate, Temporary and Short Term Housing for nearly 20 years



### Fully Furnished 1 and 2 Bedroom Apartments

**Exceptional Weekly Rates** – from \$539 to \$693 per week (depending on size and season)

Included – Utilities, Internet Access & Cable TV

**Property:** Canyon Park Complex

**Located:** 4200 SW 107<sup>th</sup> Ave, Beaverton, Oregon 97005

**All Corporate Housing America apartments are designated as Non-Smoking - This is a non-smoking property**

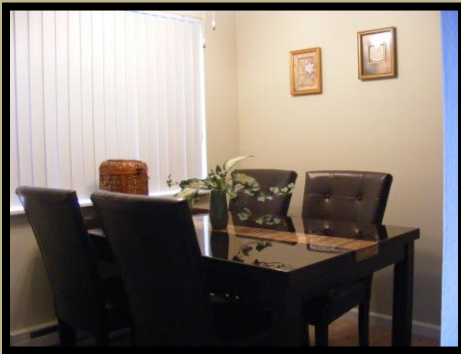
**NOTE:** Corporate Housing America does not staff an onsite office at this location.

If you stop by the property, please DO NOT Disturb the Canyon Park Leasing Office with any questions or concerns. They are not affiliated with CHA's management. We simply offer Corporate Housing at their property.

Steps away from your front door, enjoy a cup of coffee in our resident lounge, swim in the year-round heated indoor pool, or enjoy an invigorating workout in our fitness center. Kennedy Park and countless shopping and dining options are close at hand. Downtown Portland and Beaverton attractions, including major employers such as Nike, are only minutes away.

Our apartments vary from one to the other. Some units may boast custom touches including vaulted ceilings, air conditioning, lofts, skylights, raised panel cabinetry, gas or wood burning fireplaces, sunken living rooms, and other designer finishes such as lighting and hardware. We offer pet-friendly apartments at this location.

Let us show you how our "Attention to Detail" assures the comforts of home that will fit nearly every lifestyle & budget!



The images above are a sampling of our furnished one bedroom apartments ~ featuring a full kitchen, complete with dishwasher, all furnishings, utilities & housewares. Incredibly, these apartments also includes cable TV, washer & dryer, private balcony or patio, Includes one queen bed in the bedroom & can comfortably accommodate up to 2 guests.

The images above are a sampling of our furnished apartments. All apartments differ slightly in layout and furnishings.

**Corporate Housing America - We have the keys to "Your Home Away From Home"**  
**Fully furnished apartments for temporary/short term stays at very affordable rates**

**One Bedroom/1Bath Apartments - \$539 to \$609 per week**

**Two Bedroom/1Bath Apartments - \$553 to \$658 per week**

**Two Bedroom/2Bath Apartments - \$639 to \$693 per week**

**These apartments include:**

Complimentary wireless internet access  
Expanded basic cable television (approx. 70 channels)  
Utilities are also included in the weekly rate

**A complete Kitchen with:**

- Full-sized Stove
- Refrigerator
- Dishwasher
- Cooking Utensils
- Dishes and Flatware
- Pots & pans
- Microwave
- Toaster
- Coffee Maker

**Other Necessities:**

Washer and Dryer  
TV  
Alarm Clock  
Sofa, Loveseat and/or Easy Chair  
Table and Chairs  
Queen Bed

**Property Amenities:**

Year-round heated indoor pool with sun deck  
State of the art fitness center  
Resident clubhouse  
Children's play area

**Want to customize your temporary home with the conveniences you may have left behind? You can add the conveniences of home by customizing your temporary housing.**

Keurig Brewing System  
George Forman Grill and more  
Ninja Kitchen Center – 3 appliances in 1  
Portable A/C  
Second TV  
Blue-ray Player  
Tivo DVR  
Printer  
Roll-away/portable/air bed

**We are constantly expanding our list of convenience options for our guests.**

**History - Established in 1996**

Corporate Housing America began kind of by chance, with the first property in Oregon City as the "Country Garden Inn" which was a small 2 story historic bungalow that was in an ideal setting for a B&B. This property is currently still in our inventory. We have since grown into a highly sought after service in the surrounding communities including locations throughout Portland, Beaverton and Oregon City.

We pride ourselves on service and want you to be comfortable and "at home" during your stay. We feel very strongly that our service and dedication to the comfort of our guests is what sets us apart from our competitors. We believe that our concept is unique - we want your "home away from home" to be everything you need it to be. We encourage you to e-mail us at the end of your stay to help us consistently exceed expectations. Corporate Housing America was built on ....and relies upon repeat business and referrals from satisfied guests like you.

**What is the process for booking an apartment...?**

To simplify the reservation process, you can receive the paperwork via email, to be printed out, signed and either faxed or emailed back to Corporate Housing America. Or, you can access the documents via DocuSign, where you can complete and sign the documents online without having to print them out.

CHA provides comfortable fully furnished apartments at Exceptional Weekly Rates throughout the Portland Metro area. Our properties range in size and amenities. CHA has a variety of studios, 1, 2, and 3 bedroom apartments that can accommodate most lifestyles & budgets.

Our apartments have full size kitchens with dishwashers and all the basics provided. Utilities, internet access and cable television are all included in our unbeatable rates.

CHA offers the best alternative to hotel or motel accommodations when you want space and somewhere that feels like home. Whether you need a place to stay for business travel, vacations or because you have been displaced due to a remodel, fire or water damage or any other reason, we have the place for you, a place to temporarily call "home".

Here are all the particulars about securing a reservation for this apartment:

Check-in 4PM Check-out 10AM

### **Deposits and Fees**

Photo ID and CC required to reserve any of our apartments

\$800 Refundable Deposit Required

One-time Service/Booking fee - \$50

Cleaning Fee - \$100

\$150 Non-refundable Pet Fee per pet

NOTE: Minimum payment required to make a reservation if you choose not to pre-pay in full is the First week's payment, Refundable Deposit and All Fees

Call **Corporate Housing America** at 503.342.8685 to reserve your apartment today.

### **Directions to Canyon Park Apartments 4200 SW 107<sup>th</sup> Ave. Beaverton, OR 97005** **from Portland International Airport**

1. Start out going northwest on NE Airport Way then .11 miles
2. Take NE Airport Way toward Departures/Ticketing/Check-In then .18 miles
3. Keep left at the fork to continue on NE Airport Way then 2.37 miles
4. Merge onto I-205 S toward Portland/Salem then 3.07 miles
5. Merge onto I-84 W/US-30 W via EXIT 21B toward Portland then 5.44 miles
6. Merge onto I-5 S via the exit on the left toward Salem/Beaverton then 1.5 miles
7. Merge onto I-405 N via the left exit toward City Center/US-26/Beaverton then .98 miles
8. Merge onto US-26 W/Sunset Hwy W via EXIT 1D toward Beaverton/Ocean Beaches.  
then 2.97 miles
9. Merge onto SW Canyon Rd/OR-8 via EXIT 71A toward West Slope then 2.94 miles
10. Turn left onto SW 107th Ave
11. You have arrived at 4200 SW 107<sup>th</sup> AVENUE Approximately 35 Minute Drive

**Commute to Downtown Beaverton:**

3min by Car - 12min by Bus - 6min by Bike 21min on Foot

**Commute to Downtown Portland:**

14min by Car – 27min by Bus – 46min by Bike - 60+min on Foot

**Walk Score of 70 and a Transit Score of 52**

public transportation is nearby

To fully utilize this Walk Score please visit [www.walkscore.com](http://www.walkscore.com)

**Local Scene:**

**Grocery Stores:**

**Safeway 2.00 miles**

6745 SW Beaverton Hillsdale Hwy

Portland, OR 97225

Store Phone: 503-296-7220

Store Hours: Open daily 6:00 AM-1:00 AM

**Fred Meyer .47 miles**

11425 SW Beaverton Hillsdale Hwy

Beaverton, OR 97005

Store Phone: (503) 526-1800

Store Hours: Open daily 7:00 AM-11:00 PM

**Target .18 miles**

10770 SW Beaverton Hillsdale Hwy

Beaverton, OR 97005

Store Phone: (503) 626-8345

Store Hours: 8:00 AM – 11:00 PM Monday – Saturday

8:00 AM – 10:00 PM Sunday

**Coffee Shops:**

**Starbucks .9 miles**

9350 SW Beaverton Hillsdale Hwy

Beaverton, OR 97005

Store Phone: (503) 292-1573

Store Hours: 5:00 AM to 7:30 PM

**Beard Papa's .3 miles**

10500 SW Beaverton Hillsdale Hwy

Beaverton, OR 97005

Store Phone: (503) 924-1101

Store Hours: 10:00 AM – 7:00 PM Sunday - Saturday

**Bogza Coffee 1.0 miles**

12600 SW Crescent  
Beaverton, OR 97005  
Store Phone: (503) 766-3523  
Store Hours: 6:30 AM – 5:30 PM Monday – Friday  
8:00 AM – 3:00 PM Saturday & Closed Sunday

**Moonstruck Chocolate Café .6 miles**

11705 SW Beaverton Hillsdale Hwy  
Beaverton, OR 97005  
Store Phone: (503) 352-0835  
Store Hours: 8:00 AM – 10:00 PM Monday – Saturday  
9:00 AM – 9:00 PM Sunday

**Restaurants & Cafes:**

**Chang's Mongolian Grill for Stir Fry .18 miles**

10773 SW Beaverton Hillsdale Hwy  
Beaverton, OR 97005  
Store Phone: (503) 747-3880  
Store Hours: 11:30 AM – 2:30 PM Monday – Friday 12:00 PM – 3:00 PM Saturday & Sunday LUNCH  
5:00 PM – 9:30 PM Sunday – Thursday 5:00 PM – 10:00 PM Friday & Saturday DINNER

**Decarli for Italian 1.2 miles**

4545 SW Watson Ave  
Beaverton, OR 97005  
Store Phone: (503) 641-3223  
Store Hours: 4:30 PM – 10:00 PM Tuesday – Thursday  
4:30 PM – 11:00 PM Friday & Saturday 5:00 PM – 9:00 PM Sunday  
Closed Monday

**Black Bear Diner for Traditional American 1.5 mile**

13435 SW Tualatin Valley Hwy  
Beaverton, OR 97005  
Store Phone: (503) 646-4507  
Store Hours: 6:00 AM – 9:00 PM Sunday – Saturday

**Hawaiian Time for Hawaiian .19 miles**

10565 SW Beaverton-Hillsdale Hwy  
Beaverton, OR 97005  
Store Phone: (503) 372-5692  
Store Hours: 11:00 AM – 9:00 PM Sunday – Saturday

**ARA for Korean 3.0 miles**

6159 SW Murray Blvd

Beaverton, OR 97008

Store Phone: (503) 747-4823

Store Hours: 11:30 AM – 2:30 PM and 5:00 PM – 2:00 AM Monday – Saturday

11:30 AM – 2:30 PM and 5:00 PM – 9:00 PM Sunday

**Night Life:**

**Ringo's Bar & Grill 1.0 miles**

12300 SW Broadway St

Beaverton, OR 97005

Store Phone: (503) 644-7847

Store Hours: 8:30 AM – 2:00 AM Sunday – Saturday

**Bootleggers 1.1 miles**

12424 SW Broadway

Beaverton, OR 97005

Store Phone: (971) 317-2910

Store Hours: 4:00 PM – 11:00 PM Monday – Wednesday

4:00 PM – 12:00 AM Thursday – Saturday

10:00 AM – 8:00 PM Sunday

**The Lehrer 1.2 miles**

8775 SW Canyon Ln

Portland, OR 97225

Store Phone: (503) 384-2442

Store Hours: 3:00 PM – 12:00 AM Monday – Thursday

3:0 PM – 2:00 AM Friday & Saturday

Closed Sunday

**Beaverton Area Attractions & Entertainment**

**Beaverton Farmer's Market** - 12455 SW 5th St, Beaverton, OR 97075 Phone: (503) 643-5345

[www.beavertonfarmersmarket.com](http://www.beavertonfarmersmarket.com)

**Rice Northwest Museum of Rocks & Minerals** - 26385 NW Groveland Dr, Hillsboro, OR 97124

Phone: (503) 647-2418 [www.ricenorthwestmuseum.org](http://www.ricenorthwestmuseum.org)

**Interactive Museum of Gaming & Puzzlery** - 8231 SW Cirrus Dr, Beaverton, OR 97008

Phone: (503) 469-9998 [www.imogap.org](http://www.imogap.org)

**Pittock Mansion** - 229 NW Pittock Drive, Portland, OR 97210 Phone: (503) 823-3623

[www.pittockmansion.com](http://www.pittockmansion.com)

**Portland Children's Museum** - 4015 SW Canyon Rd, Portland, OR 97221 Phone: (503) 223-6500  
[www.portlandcm.org](http://www.portlandcm.org)

**Vintagetek** - 4620 A SW Beaverton Hillsdale Hwy, Portland, OR 97221 Phone: (503) 244-0200  
[www.vintagetek.org](http://www.vintagetek.org)

**Washington County Museum** - 120 E Main St, Hillsboro, OR 97123 Phone: (503) 645-5353  
[www.washingtoncountymuseum.org](http://www.washingtoncountymuseum.org)

**Cooper Mountain Vineyards** - 9480 SW Grabhorn Rd, Beaverton, OR 97007 Phone: (503) 649-0027  
[www.coopermountainwine.com](http://www.coopermountainwine.com)

**Cinemark 16 Cedar Hills Crossing** - 3200 SW Hocken Ave, Beaverton, OR 97005 Phone: (503) 520-0892

**Art on Broadway** - 12570 SW Broadway St, Beaverton, OR 97005 Phone: (503) 601-3300  
[www.artonbroadway.net](http://www.artonbroadway.net)

**Ceramicafe Art Lounge** - 14600 SW Murray Scholls Dr, Beaverton, OR 97007 Phone: (503) 590-8510  
[www.ceramicafenw.com](http://www.ceramicafenw.com)

**Live Laugh Love Glass** - 12230 SW Main St, Ste B, Tigard, OR 97223 Phone: (503) 244-7811  
[www.livelaughloveglass.com](http://www.livelaughloveglass.com)

**Cedar Hills Recreation Center** - 11640 SW Park Way, Portland, OR 97225 Phone: (503) 629-6340  
[www.thprd.org/facilities/cedarhills](http://www.thprd.org/facilities/cedarhills)

**Tualatin Hills Nature Park** - 15655 SW Millikan Blvd, Beaverton, OR 97006 Phone: (503) 645-6433  
[www.thprd.org/parks/thnp.cfm](http://www.thprd.org/parks/thnp.cfm)